

VBD-150W-CV-IDP-G2



Controller: VBD-150W-CV-IDP-G2



Power Supply: VLD100W24CG/VLD150W24CG



Completed Solution(power supply+controller)

Product description

A completed solution should be composed of a constant voltage (model number: VLD150W24CG /VLD100W24CG which also come from Vlinca) and a bluetooth controller (VBD-150W-CV-IDP-G2), casambi enabled, five-channel constant voltage controller for constant voltage LED loads, such as LED strips and constant voltage LED modules, it can be configured with 5 different fixture profiles for 1,2,4,5-channel applications (dimming, tunablewhite, RGBW, RGB+CW, RGBCW)

Wiring diagram, dim



Wiring diagram, tunable white



Wiring diagram, RGBW



Wiring diagram, RGBCW & RGB/TW



Driver specification parameters

Input voltage(AC)	• 220-240V
Input current	• $\leq 0.9A$
Output voltage(DC)	• 24V
Output current	• $\leq 6.25A$
Ambient temperature t_a	• $-20^{\circ}C \dots +45^{\circ}C$
Max. casing temperature t_c	• $90^{\circ}C$
Life time	• up to 50,000 h
Dimensions (L* W*H)	• 319mm * 30mm * 18mm
Degree of protection	• IP20

Controller specification parameters

Input voltage (DC)	• 24V
Output voltage (DC)	• 24V
Output power	• $\leq 150W$
Max (free allocation to channels) output current	• $\leq 6.25A$
Life time	• up to 50,000 h
Dimensions (L* W*H)	• 93mm * 30mm * 18mm
Wire range, solid	• 0,5–1 mm ²
Wire strip length	• 4-5 mm
Dimming range	• 1-100%
Effective communication distance in open air	• 50m
Protection	• Short-circuit protection

Fixture profiles

Profile#	Profile name / in app description	Description	Manual app control
39425	VBD-150W-CV1-IDP-G2(DIM)	For dimming application	
39424	VBD-150W-CV2-IDP-G2(TW)	For tunable white application	
41030	VBD-150W-CV4-IDP-G2(RGBW)	For RGBW application	
37751	VBD-150W-CV5-IDP-G2(RGBCW)	For RGBCW application	
42698	VBD-150W-CV5-IDP-G2(RGB/TW)	For RGB/TW application	

Change fixture profile

- _ The default fixture profile in device is “VBD-150W-CV5-IDP-G2(RGBCW)”.
- _ If need to change the fixture profile of the device, make sure it is in unpaired status.
- _ Follow steps in Figure 1, change the fixture profile to another.
- _ When the update process is in verifying, tap the reset button(as in figure 3), then update success.

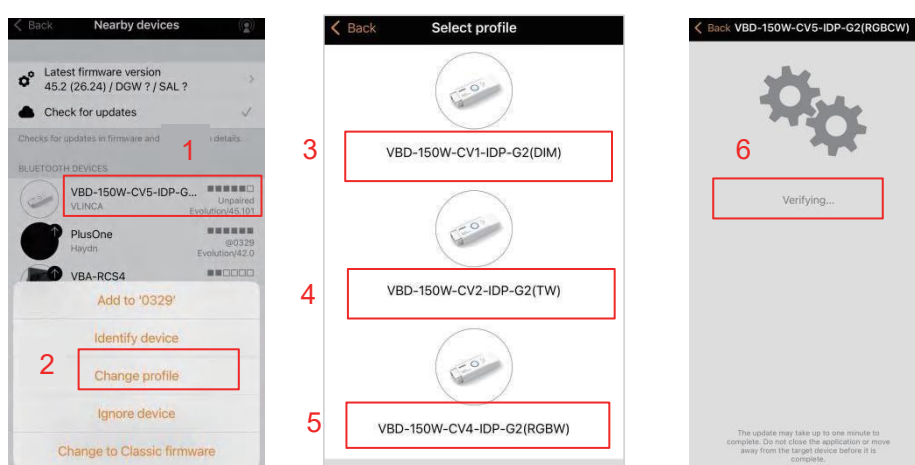


Figure 1

LED indications

On reset button: when the device is unpaired, blue stays on. If paired, blue flashes.

Reset Button

To unpair the device from other network, follow the steps in Figure 2. Then, press the reset button (as in Figure 3), and it will implement “Switch OFF and back ON again”.

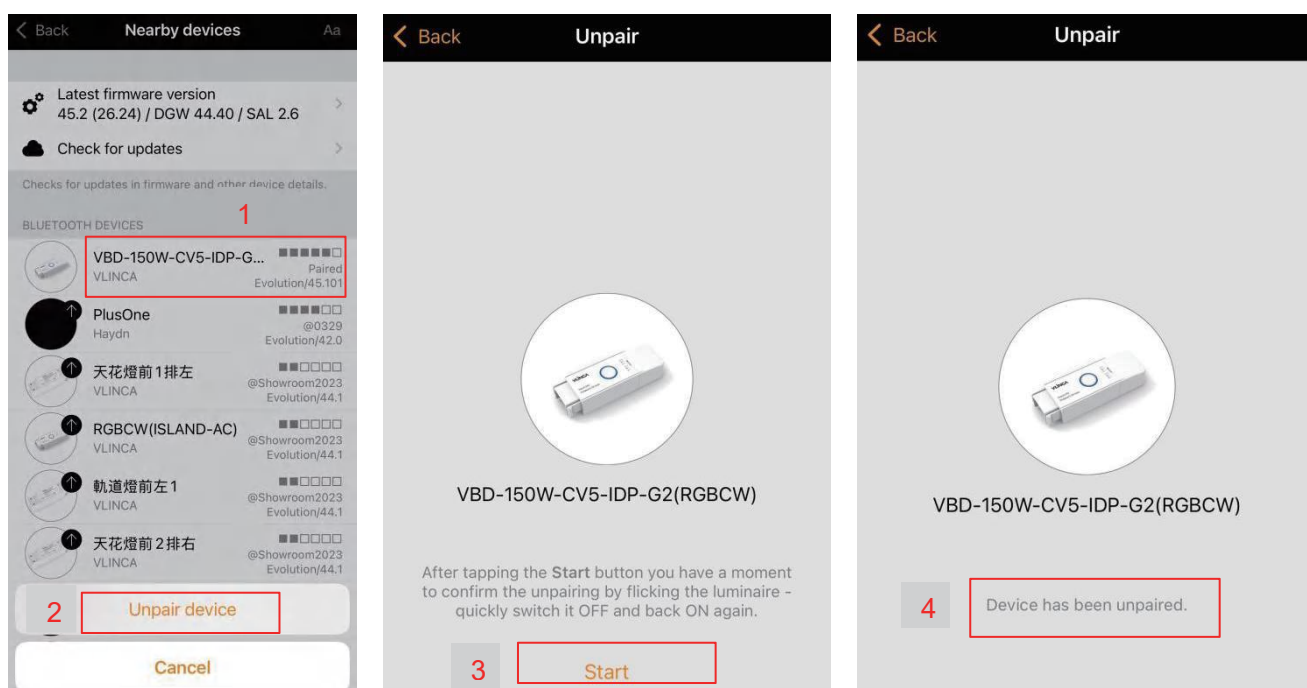


Figure 2



Figure 3

DISPOSAL INSTRUCTIONS In line with EU

Directive 2012/19/EU for waste electrical and electronic equipment (WEEE), this electrical product must not be disposed of as unsorted municipal waste. Please dispose of this product by returning it to the point of sale or to your local municipal collection point for recycling.

COMPLIANCE STATEMENT

VLINCA declares that the VBD-150W-CV-IDP-G2 fully complies with Directive 2014/53/EU.

Revision record

Version	Remark	Revision date
V1.0	Newly formulate	Mar 12, 2025
V1.1	Product description change and increase fixture ID	Jul 23rd 2025